

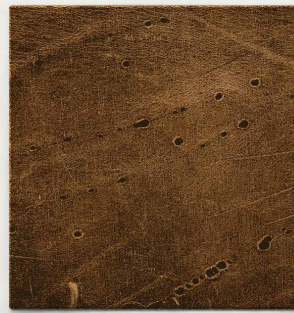
CHARACTER TRAITS

VARIATIONS IN NATURAL LEATHER



WRINKLES

When an extra thick piece of leather is bent back on itself naturally, it adds character that creates dimension. It's true what they say, a wrinkle merely indicates where a smile has been.



SCARS

These are heralded events in the lives of our cows and bulls - a tussle with the tough mesquite bushes, a battle, a run through the barbed wire fence. Typically these will surface as long thin black lines. The appropriate response is a nod of respect for a fight well fought.



STRETCH MARKS

These serve as an indication of life. Stretch marks occur with extremely fast growth or living large and in charge. Either way it means this animal was at the top of the metaphorical food chain. Share the glory and the gluttony.



CALLOUSES

And you thought the raised teats on a Longhorn were just for good looks? Callouses provide a great guard that limits scrapes and cuts as the cow walks through fields of prickly cacti. Callouses are the result of these life patterns, rubbing that itchy spot with your horn or sleeping on your side. See? Habits do make a difference. They will appear as small, circular, smooth markings.



INSECT BITES

These are visible signs that we're not the only ones who battle tiny jaws, stingers and suckers. They may appear as tiny black or off-colored spots. Stand in stoic appreciation of the creature who was unable to slap a mosquito with its hoof.



VEINS

One of the key markings of a well marbled leather hide are veins. Not to be confused with a blood pumping body builder caught in a Vesuvius moment. Hmmm...Vesuvius Veins. It sounds like an iconic rock band or a really nice piece of leather.



COLOR

All cows and bulls are not the same. We don't discriminate against skin color. Sometimes, the color of one product next to the other may be a slightly darker or lighter shade. This also may change the darkness of the imprint.

